

OPACI-COAT Family High Performance Glass Coatings



S E L E C T A N Y C O L O R

Peachtree Dunwoody Medical
Center, Atlanta, GA. Joseph Perry
& Associates.
PPG Starphire® with Primary
White OPACI-COAT-300®.
Fabricator, TGI, Austel, GA.





Silicone Is The Difference

Thanks to advanced technologies and the affinity of silicone to glass and metals there is now

an economic, water-based elastomeric coating that provides the optimum in glass opacification — OPACI-COAT from ICD High Performance Coatings.

Colors Unlimited

No longer must architects and designers be content with old, tired colors. OPACI-COAT coated glass may be specified in most any color found on a color chip, no matter how bright or vivid. An average project can become an architectural masterpiece with OPACI-COAT.

Exact Color Matching

Matching is computerized and exact with a color spectrophotometer in ICD's facility. Meticulously duplicated color samples on any glass substrate can be returned to owners or clients within days. Matching on reflective or high performance product (sputter or pyrolytic) is possible without guesswork regarding the final outcome.

Ideal For Interiors

OPACI-COAT, with its nearly unlimited range of colors, offers greatly increased options for interior glass applications. Used on clear or reflective glass it can add shimmering, jewel-like colors to the interiors of hotels, shops, restaurants, galleries and hospitals, as well as residential kitchens and baths. The use of OPACI-COAT is limited only by the imagination of the user in either new construction, remodeling or retrofitting. Glass and color - a truly dazzling combination.

Possible On Any Glass

OPACI-COAT allows the choice of any type of flat, bent or block glass. Since OPACI-COAT is applied without heat at the final stage of the glass spandrel fabrication process it can be used with equal effectiveness on annealed, heat-strengthened, fully tempered, clear or high performance reflective products. Tinted or reflective colors can be harmonized or matched to eliminate any "banding" effect even on high visible transmission glass.

Fallout & Environmental Safety

When OPACI-COAT is applied to glass, a rubber-like elastomeric film is created which satisfies the criteria for fallout protection/safety glazing without the need for taping or the application of scrim films. Unlike other glass opacifying materials, OPACI-COAT is lead free, contains no organic solvents and is self extinguishing. It can be handled at any stage with no fear of personal or environmental harm.

Trained, Certified Applicators

Although OPACI-COAT is applied similarly to other industrial coatings, ICD has selected, trained and certified APPROVED FACTORY FABRICATORS with specialized application equipment and controlled environments so that proper adhesion, color and quality are assured. This, along with regularly scheduled inspections, insures the architect and final building owner of glass product that is exactly as specified and warranted.

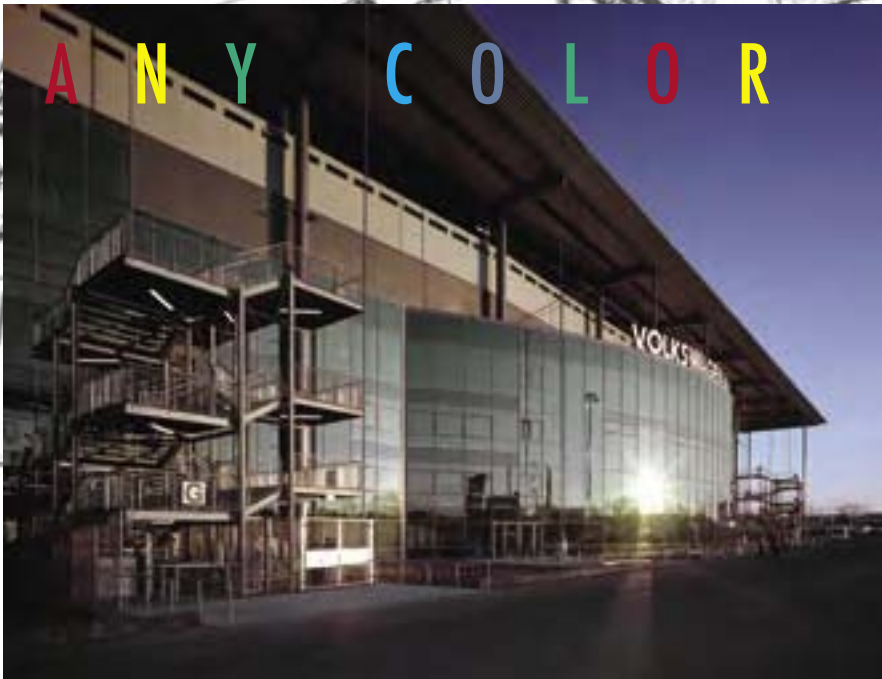
Sustainable Building

One of ICD's core values is to create, not only a safe and clean place for employees to work, but products that add value to Green & Sustainable Building Practices. Our products are low VOC and contain no heavy metals or anything toxic or harmful. We believe at our core in contributing to the health of our planet as opposed to harming it.

S E L E C T



T A N Y C O L O R



Top: Andrex Vermont Gateway, Gardena, CA. Andrex Development Company. Two Color OPACI-COAT-300®.

Bottom left: Volkswagen Arena, Wolfsburg, Germany. Hentrich-Petschnigg & Partner Architects. #3-820 Harmony Gray OPACI-COAT-300® on Silverstar Sunstop Irish 50 glass. Fabricator, Glas Trosch Holding AG.

Above: Designer and Fabricator, Saint Glas, Hong Kong. OPACI-COAT-300® on clear glass.

ICD is Celebrating Over 20 Years of Coating the World...

Designer and Fabricator;
Saint Glas, Hong Kong.
OPACI-COAT-300®
on clear glass.



History of Performance

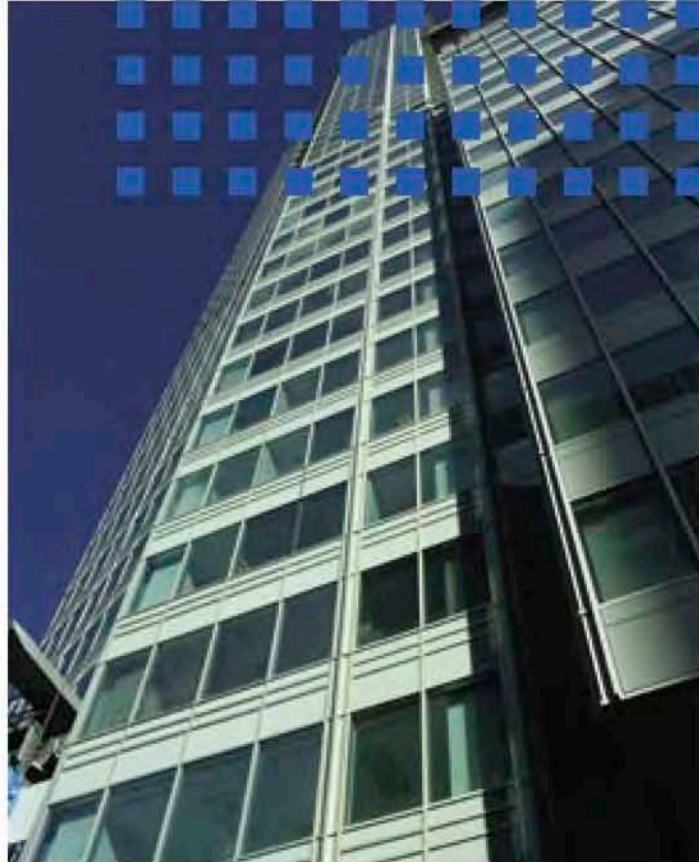
In addition to hundreds of projects from South Texas to Sweden and Alaska to Florida, extensive testing has been done: ASTM fallout, safety glazing, and extended QUV — all of which are available from ICD or the Fabricator.

Limited Warranty

A limited warranty is offered to the Approved Factory Fabricators who apply and handle the product as prescribed.

Service to Architects/Designers

ICD stands ready to offer project assistance to owners, architects and designers through its Approved Factory Fabricators. Color matching, special color samples in required sizes, and compatibility testing of sealants are available. Please contact the fabricator below.



Shaw Tower; Vancouver; British Columbia, Canada. James KM Cheng Architects, Inc. #RC3-1199 Silver Lining OPACI-COAT-300® on AFG Clear Glass. Fabricator; Vitrum Industries.

ICD High Performance Coatings

13911 NW 3rd CT STE 100, Vancouver; Washington USA 98685
Phone (360) 546-2286 • Fax (360) 546-2287 • www.icdcoatings.com

